

Abfallhai – The original

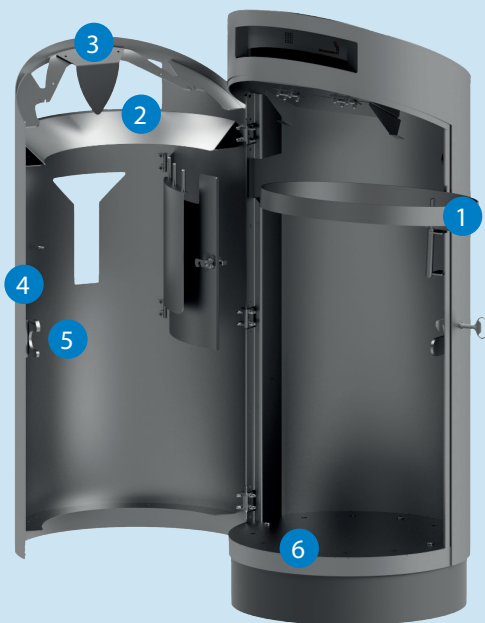


abfallhai[®]

The Abfallhai: Our superhero turns 20!

It is to waste management what the smartphone is to the mobile phone industry: the Abfallhai is a veritable milestone in waste disposal, one that has been in use for 20 years. The sleek design blends into any environment and creates a discreet solution for the disposing of waste of all kinds, both indoors and in public spaces - whether 1 or 1,000 litres: the Abfallhai comes in various sizes and swallows the amount that is appropriate for the respective surroundings. Modular and service-friendly, the Abfallhai is particularly easy to use - emptied and ready to use again within seconds: saving time and money.

Here today, there tomorrow, and what doesn't fit is made to fit: a range of fixing and mounting options ensures quick installation regardless of the situation. Made of chrome steel and therefore particularly sturdy and easy to clean, neither vandalism nor unfavourable weather can harm the Abfallhai so quickly. A Abfallhai can be over 30 years old, and if it needs a beauty treatment in the form of a repair or cleaning, our Abfallhai® service is there for you at all times regardless of where you are located.



This is the Abfallhai

The Abfallhai is made of 3 mm chrome steel V2A (1.4301) and is equipped with numerous features, from the screw-down base to the Shark Tooth.

- 1 Easy emptying thanks to the swing-out Bag holder with automatic reset
- 2 Contact-free disposal thanks to large disposal opening with drip nose and disposal chute which guides the rubbish directly into the rubbish bag inside
- 3 All models available with Shark Tooth on request
- 4 Ergonomic, practical and convenient front access with a 4-fold reinforced swing door
- 5 Easy opening and locking with a snap lock, triangular lock and kick guard
- 6 Direction of disposal can be adjusted as desired at an angle of 30 degrees

The advantages of the Abfallhai at a glance

- Sturdy, easy to clean and vandal-proof
- Greatest possible fire safety with fire-resistant and fire-retardant material
- Quick and convenient emptying in 20 seconds
- Available in various sizes (1 to 1,000 litres) and designs (for example with ashtray, dog waste bag or Shark Tooth)
- Flexible mounting options
- No access for animals such as birds, cats or foxes
- All functions available with just a single key



A look at the Abfallhai features



Smart: the sloping roof prevents the depositing of trash on top.



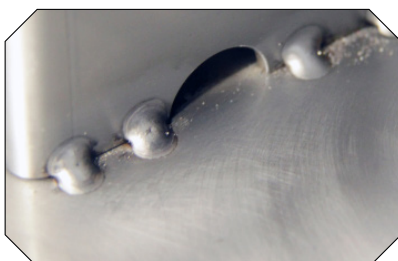
High quality: top-quality hinges made of chrome steel with stop lock.



Quick and convenient: The Shark Fix automatically affixes the rubbish bag.



Safe like a vault: 5 mm lock with snap lock and kick guard, 8 mm triangular key.



Sturdy: MAG and spot welding ensure resistance against vandalism.



Safe and efficient: easy emptying of the ashtray.



Can be equipped individually: all models are available with Shark Tooth on request.



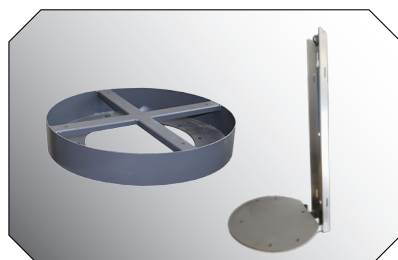
Good for animals and the environment: all models can be equipped with a dog waste



Customisable: All models can be customised with your logo or emblem.



Modular: also available with aluminium inner container on request.



Flexible: wall or pole mounting
Rock solid: the base can be screwed down or filled with concrete.



Adaptable: can be mounted on sloping terrain with a gradient of up to 27%.

Abfallhai – Impressions



AH_LEN_13_04.23